

TITLE: DRAWINGS LIST AND REFERENCE VIEWS
 DWG NO.: HB-20R-TER-006-01 SHEET 1 OF 1

DRAWINGS LIST		
ITEM	DESCRIPTION	DRAWING
1	DRAWINGS LIST AND REFERENCE VIEWS	HB-20R-TER-006-1
2	GENERAL LAYOUT	HB-20R-TER-008-1
3	CONTAINER RE-FRAMING	HB-20R-TER-010-1
4	CONTAINER RE-FRAMING DETAILS	HB-20R-TER-010-2
5	AWNING ASSEMBLY	HB-20R-TER-012-1
6	AWNING MOUNT LAYOUT	HB-20R-TER-014-1
8	COUNTERTOP - THREE PARTS ASSEMBLY	HB-20R-TER-018-1
10	100A ELECTRICAL PLAN	HB-20R-TER-022-1

GENERAL NOTES:
 1. ALL DIMENSIONS IN INCHES U.N.O.
 2. ALL STRUCTURAL WELDS ARE 3/16" FILLET U.N.O.
 3. ALL WELDING AND CONSUMABLES CONFORMS TO CWB W59
 4. FABRICATION TOLERANCE ± 1/16"
 5. PAINT AS PER MANUFACTURE STANDARD
 6. ADAPT PARTS AS NEEDED TO FIT PER SHOP FABRICATION STANDARD

REV	DESCRIPTION	REV BY	DATE
1	I F C	MDK/RS	06/09/23
A	INITIAL RELEASE	MDK/RS	06/30/20

REVISION HISTORY



THIS DRAWING, INCLUDING CONTENTS AND PROPRIETARY INFORMATION, IS THE PROPERTY OF HONOMOBO. IT IS TO BE USED ONLY FOR THE PROJECT AND SITE SPECIFICALLY IDENTIFIED HEREIN. NO PARTS OF THIS DRAWING OR ITS CONTENTS MAY BE REPRODUCED OR TRANSMITTED IN ANY FORM OR BY ANY MEANS, ELECTRONIC OR MECHANICAL, INCLUDING PHOTOCOPYING, RECORDING, OR BY ANY INFORMATION STORAGE AND RETRIEVAL SYSTEM, WITHOUT THE WRITTEN CONSENT OF HONOMOBO.

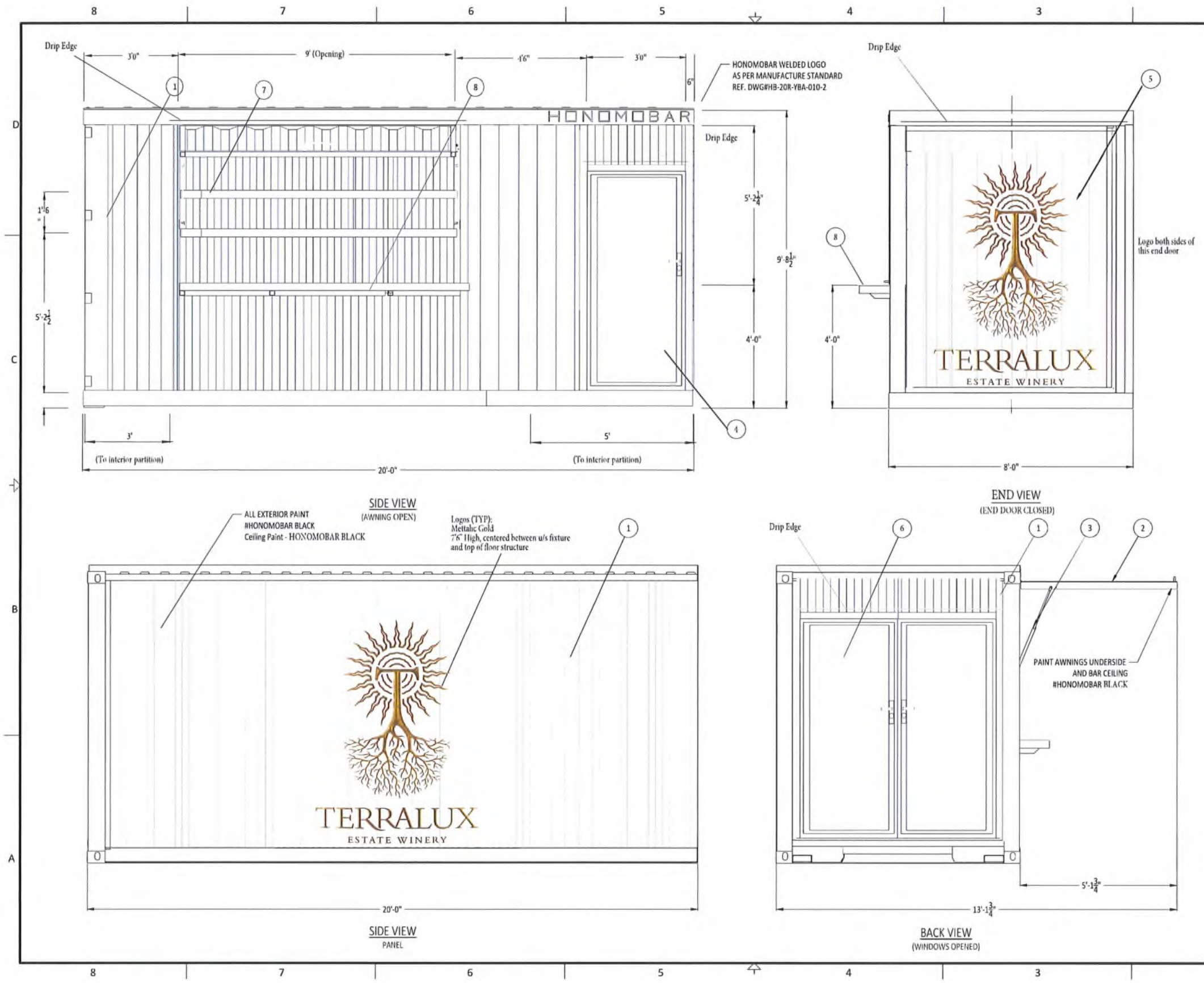
TITLE: DRAWINGS LIST AND REFERENCE VIEWS

PROJECT: HONOMO BAR 20 FT - R - Terralux

DRAWN BY: MDK 06/30/20 CHECKED BY: RS 06/30/20

SIZE	SCALE	PROJECT NO.	DWG NO.	REV
B	NTS	HB-20R-TER	HB-20R-TER-006-1	1

SHEET 1 OF 1



TITLE: GENERAL LAYOUT
DWG NO: HB-20R-TER-008-1 SHEET 1 OF 1

PARTS LIST			
ITEM	QTY	DESCRIPTION	DRAWING/PART
1	1	CONTAINER RE-FRAMING LAYOUT	HB-20R-TER-010-1
2	2	AWNING ASSEMBLY	HB-20R-TER-012-1
3	1	AWNING MOUNT LAYOUT	HB-20R-TER-014-1
4	1	3'0" Steel Mandoor	
5	1	Custom Steel End Wall Door	
6	1	Steel DOUBLE Mandoor (3'0" each)	
7	4	3 1/8" THICK x 9" W x Various Lengths	DOUGLAS FIR
8	1	COUNTERTOP - TWO PARTS ASSEMBLY	HB-20R-018-1

GENERAL NOTES:

- ALL DIMENSIONS IN INCHES U.N.O.
- ALL STRUCTURAL WELDS ARE 3/16" FILLET U.N.O.
- ALL WELDING AND CONSUMABLES CONFORMS TO CWB W59
- FABRICATION TOLERANCE ± 1/16"
- PAINT AS PER MANUFACTURE STANDARD
- ADAPT PARTS AS NEEDED TO FIT PER SHOP FABRICATION STANDARD

REV	DESCRIPTION	REV BY	DATE
1	I F C	MDK/RS	06/09/23
A	INITIAL RELEASE	MDK/RS	06/30/20

REVISION HISTORY

HONOMOBO

THIS DRAWING, COPIED, COLLECTED, AND OTHERWISE REPRODUCED, IN WHOLE OR IN PART, WITHOUT THE WRITTEN PERMISSION OF HONOMOBO, IS STRICTLY CONFIDENTIAL AND NOT BE LOANED, REPRODUCED, COPIED, OR OTHERWISE USED FOR ANY OTHER PURPOSE WITHOUT THE WRITTEN PERMISSION OF HONOMOBO.

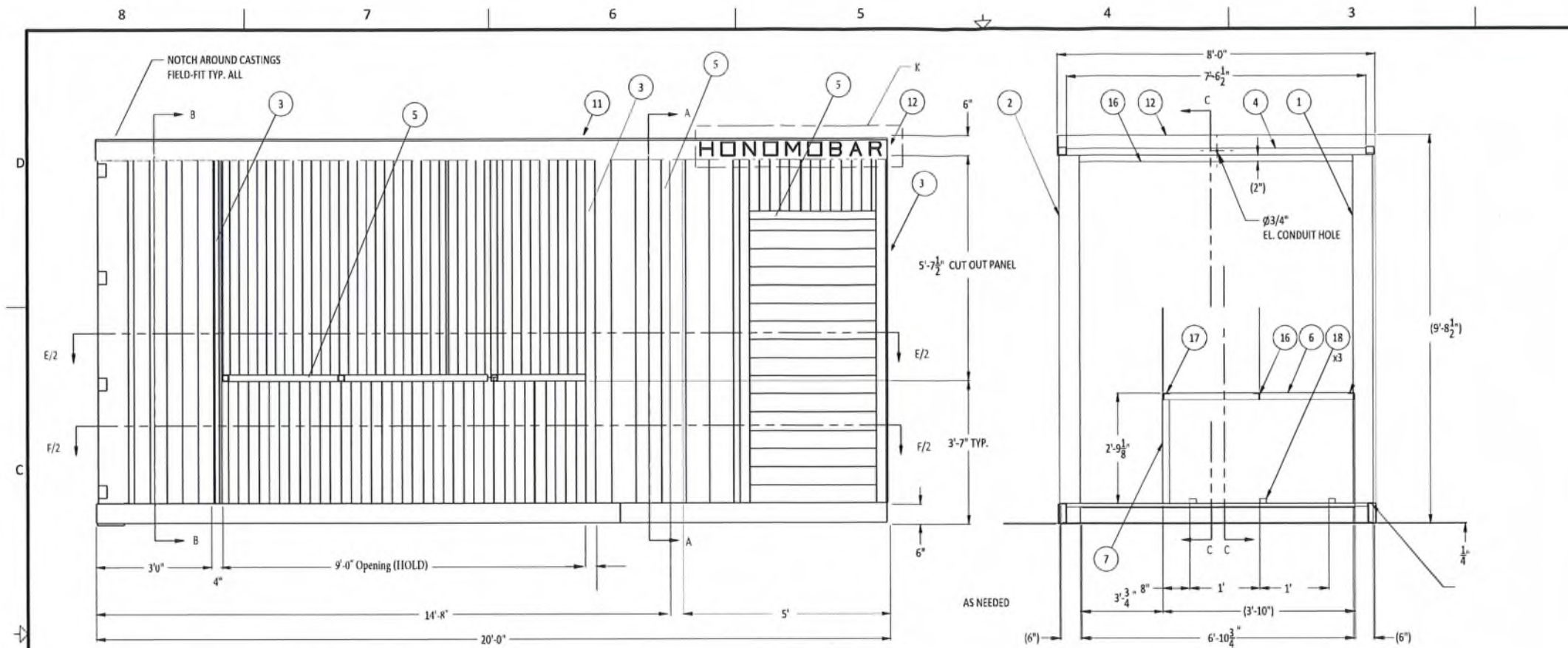
TITLE: GENERAL LAYOUT

PROJECT: HONOMOBAR 20 FT - R - Terralux

DRAWN BY: MDK 06/30/20 **CHECKED BY: RS** 06/30/20

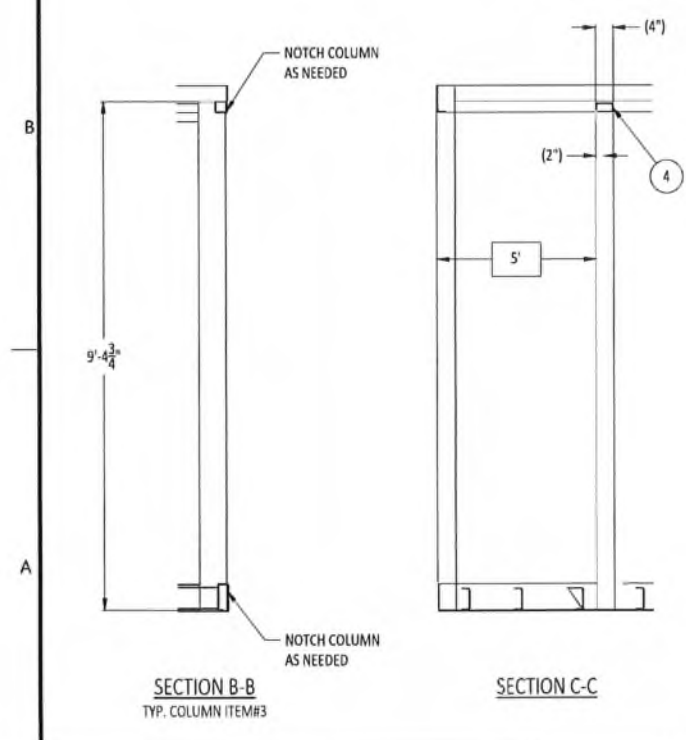
SIZE: B **SCALE: NTS** **PROJECT NO: HB-20R-TER** **REV: 1**

SHEET 1 OF 1 **DWG NO: HB-20R-TER-008-1**



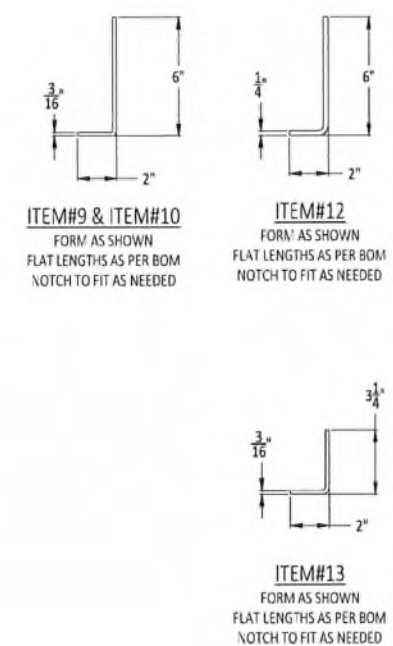
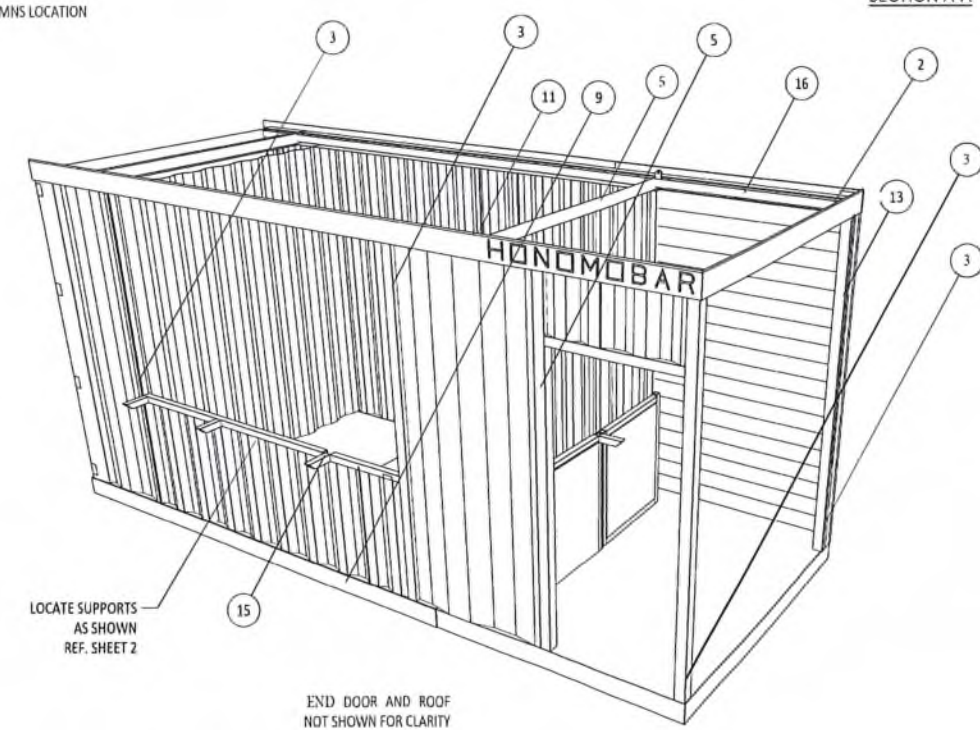
SIDE VIEW
REF. SHEET 2 FOR DETAILED COLUMNS LOCATION

SECTION A-A



SECTION B-B
TYP. COLUMN ITEM#3

SECTION C-C



TITLE: CONTAINER RE-FRAMING LAYOUT
DWG NO.: HB-ZOR-TER-010-1 SHEET 1 OF 2

PARTS LIST					
ITEM	QTY	DESCRIPTION	WIDTH	LENGTH	MATERIAL
1	1	HSS 6 x 2 x 3/16		9'-2 3/16"	G40.21 50W
2	1	HSS 6 x 4 x 3/16		9'-2 3/16"	G40.21 50W
3	2	HSS 6 x 4 x 3/16		9'-4 3/4"	G40.21 50W
4	1	HSS 6 x 4 x 3/16		7'-6 1/2"	G40.21 50W
5	2	HSS 2 x 2 x 3/16		7'-3 1/2"	G40.21 50W
					G40.21 50W
					G40.21 44W
9	1	PL 3/16"	7 3/4"	19'-11 1/4"	G40.21 44W
10	1	PL 3/16"	7 3/4"	8'-0"	G40.21 44W
11	1	PL 1/4"	6"	19'-11 1/4"	G40.21 44W
12	1	PL 1/4"	7 9/16"	7'-11 3/4"	G40.21 44W
13	1	PL 3/16"	5"	8'-8 7/8"	G40.21 44W
14	6	L 2 x 2 x 3/16"		8"	G40.21 44W
15	5	L 2 x 2 x 3/16"		8"	G40.21 44W
16	1	HSS 2 x 2 x 3/16		6'-10 3/4"	G40.21 50W
17	3	L 2 x 2 x 3/16"		2"	G40.21 44W
18	-	L 2 x 2 x 3/16		7"	G40.21 44W

GENERAL NOTES:
 1. ALL DIMENSIONS IN INCHES U.N.O.
 2. ALL STRUCTURAL WELDS ARE 3/16" FILLET U.N.O.
 3. ALL WELDING AND CONSUMABLES CONFORMS TO CWB W59
 4. FABRICATION TOLERANCE ± 1/16"
 5. PAINT AS PER MANUFACTURE STANDARD
 6. ADAPT PARTS AS NEEDED TO FIT PER SHOP FABRICATION STANDARD

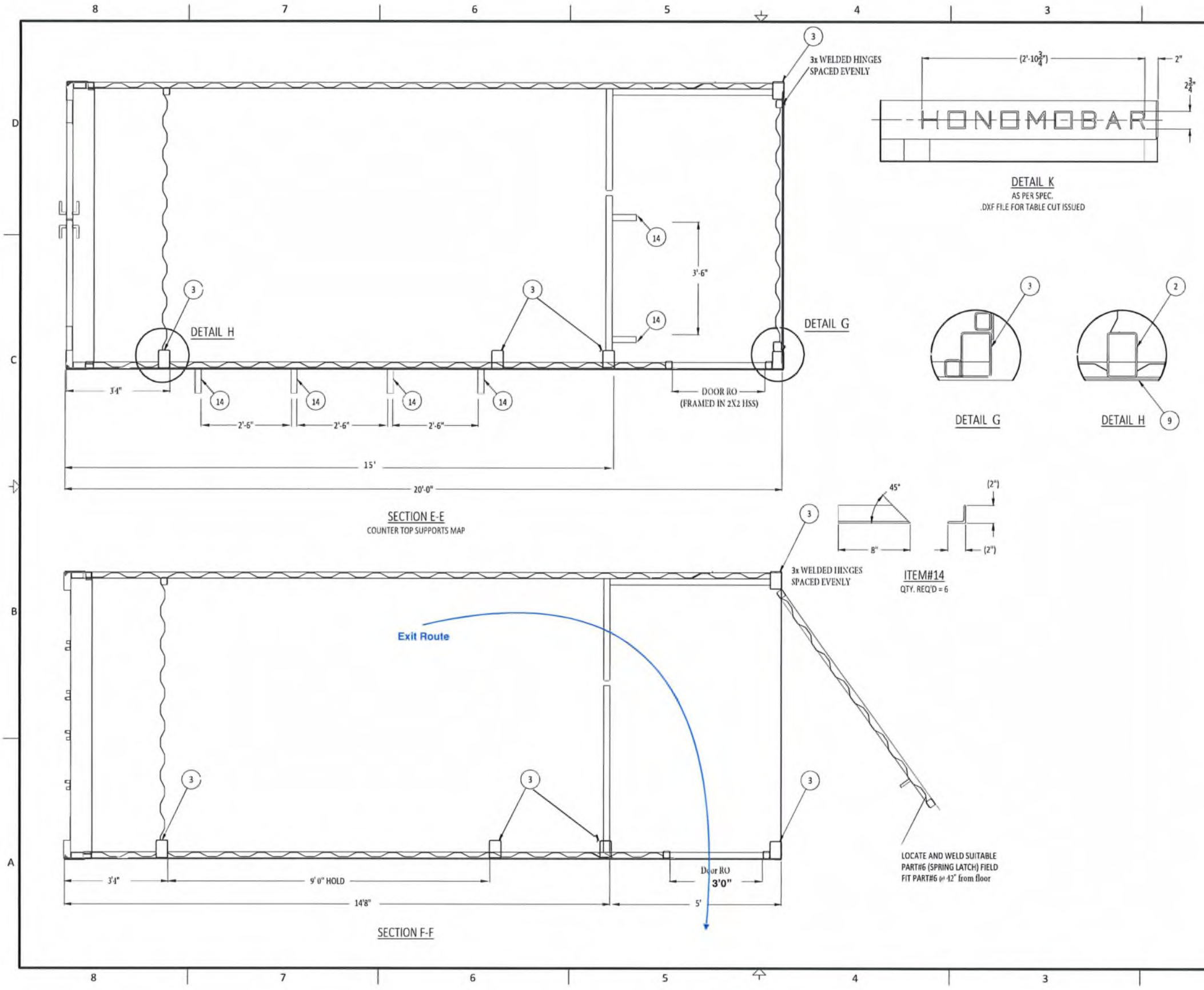
REV	DESCRIPTION	REV BY	DATE
1	I F C	MDK/RS	06/09/23
A	INITIAL RELEASE	MDK/RS	06/30/20

REVISION HISTORY

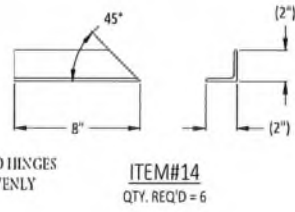
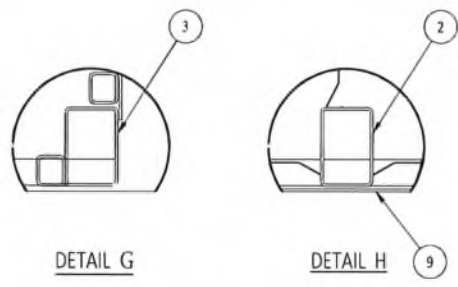
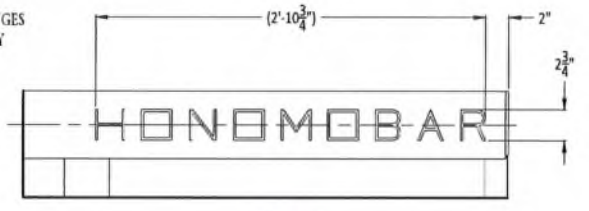
HONOMOBO

THIS DRAWING CONTAINS CONFIDENTIAL AND PROPRIETARY INFORMATION. BY CONTAINING HEREIN OR BEING REFERRED TO IN THIS DRAWING, THE CONTENTS ARE NOT TO BE REPRODUCED, COPIED, OR DISCLOSED IN ANY MANNER WITHOUT THE WRITTEN CONSENT OF HONOMOBO.

TITLE: CONTAINER RE-FRAMING LAYOUT
 PROJECT: HONOMOBAR 20 FT - R - Terralux
 DRAWN BY: MDK 06/30/20 CHECKED BY: RS 06/30/20
 SIZE: SCALE: NTS PROJECT NO.: HB-ZOR-TER REV
 B SHEET 1 OF 2 DWG NO.: HB-ZOR-TER-010-1 1



TITLE: CONTAINER RE-FRAMING DETAILS
 DWG NO.: HB-20R-TER-010-2 SHEET 2 OF 2

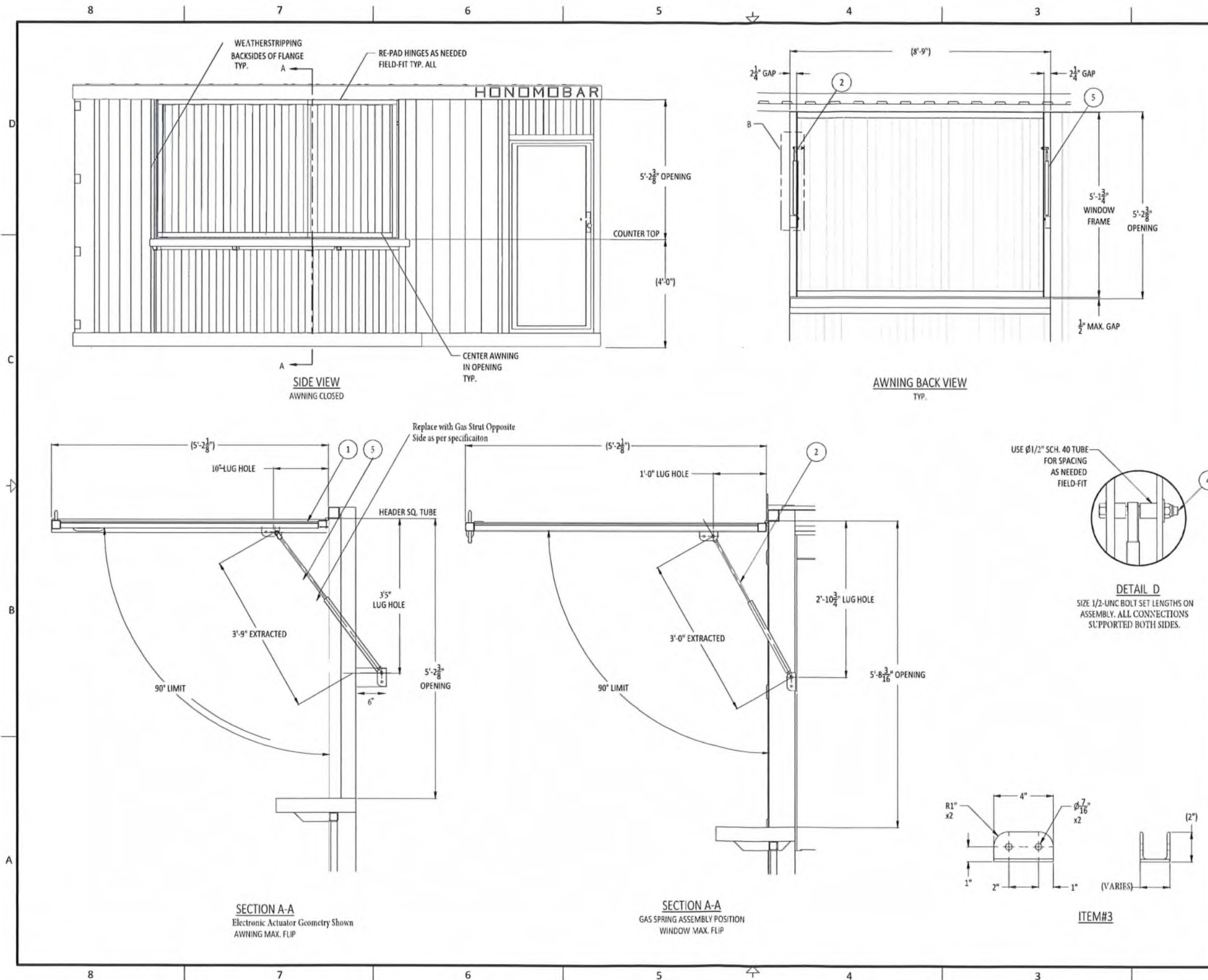


GENERAL NOTES:
 1. ALL DIMENSIONS IN INCHES U.N.O.
 2. ALL STRUCTURAL WELDS ARE 3/16" FILLET U.N.O.
 3. ALL WELDING AND CONSUMABLES CONFORMS TO CWB W59
 4. FABRICATION TOLERANCE ± 1/16"
 5. PAINT AS PER MANUFACTURE STANDARD
 6. ADAPT PARTS AS NEEDED TO FIT PER SHOP FABRICATION STANDARD

REV	DESCRIPTION	REV BY	DATE
1	1 F C	MDK/RS	06/09/23
A	INITIAL RELEASE	MDK/RS	06/30/20

HONOMOBO

TITLE: CONTAINER RE-FRAMING DETAILS
 PROJECT: HONOMOBO 20 FT - R - Terralux
 DRAWN BY: MDK 06/30/20 CHECKED BY: RS 06/30/20
 SCALE: NTS PROJECT NO.: HB-20R-TER
 SHEET 2 OF 2 DWG NO.: HB-20R-TER-010-2 REV 1



TITLE: AWNING MOUNT LAYOUT				
DWG NO.: HB-20R-TER-014-1				SHEET 1 OF 1
PARTS LIST				
ITEM	QTY	DESCRIPTION		
1	2	AWNING ASSEMBLY DWG#HB-20R-TER-012-1		
2	2	GAS SPRING GEMINI #816.1757 2450N; 15" STROKE		
3	4	L 2 x 2 x 3/16	4"	G40.21 44W
4	8	3/8-UNC BOLT SET		GR. 8
5	1	ELECTRONIC LINEAR ACTUATOR		

Note different geometry for gas spring and electronic actuator as noted.

GENERAL NOTES:

1. ALL DIMENSIONS IN INCHES U.N.O.
2. ALL STRUCTURAL WELDS ARE 3/16" FILLET U.N.O.
3. ALL WELDING AND CONSUMABLES CONFORMS TO CWB W59
4. FABRICATION TOLERANCE ± 1/16"
5. PAINT AS PER MANUFACTURE STANDARD
6. ADAPT PARTS AS NEEDED TO FIT PER SHOP FABRICATION STANDARD

REV	DESCRIPTION	REV BY	DATE
1	I F C	MDK/RS	06/09/23
A	INITIAL RELEASE	MDK/RS	06/30/20

REVISION HISTORY

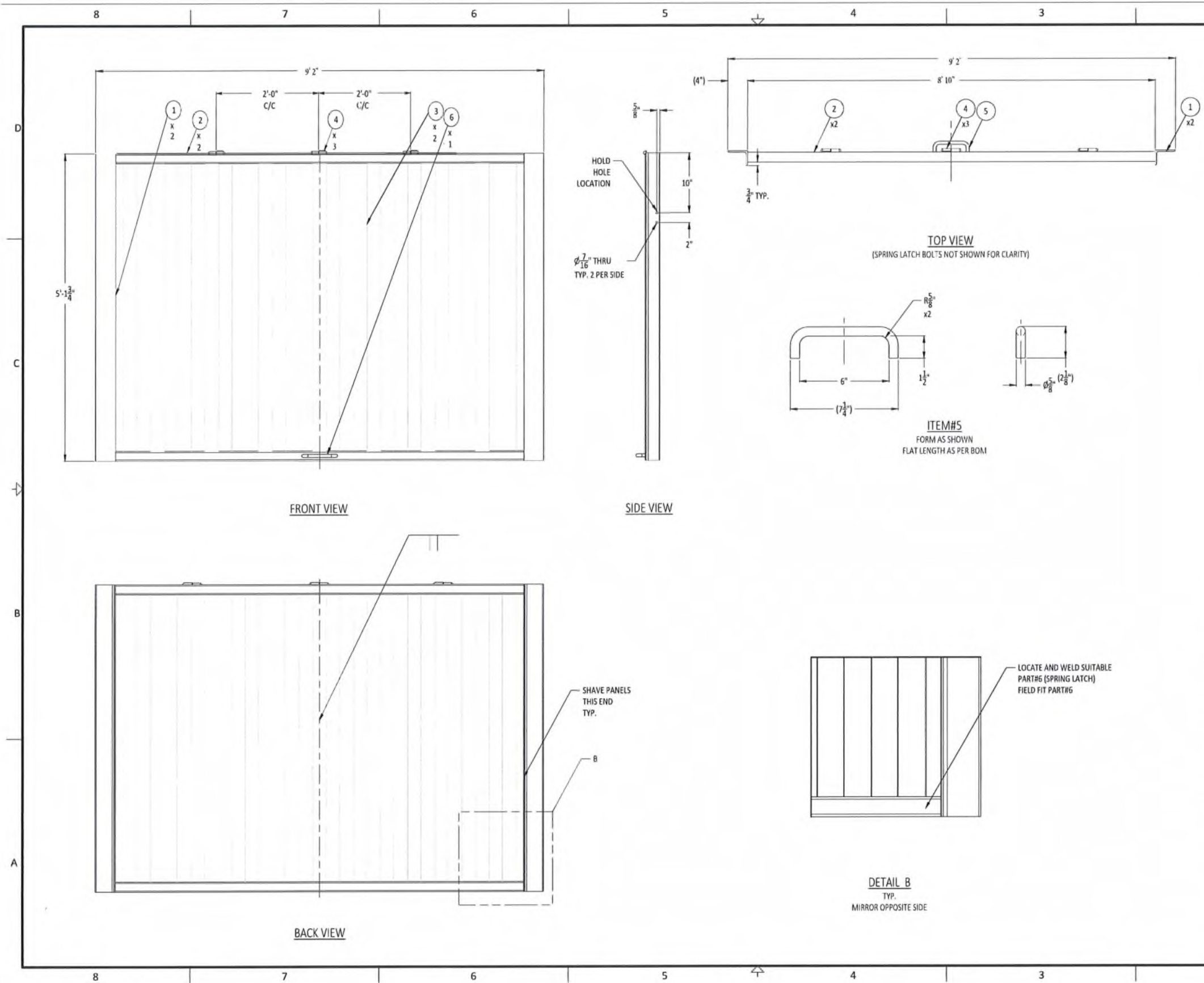
HONOMOBO

TITLE: AWNING MOUNT LAYOUT

PROJECT: HONOMOBAR 20 FT - R - Terralux

DRAWN BY: MDK	06/30/20	CHECKED BY: RS	06/30/20
---------------	----------	----------------	----------

SIZE	SCALE: NTS	PROJECT NO.: HB-20R-TER	REV
B	SHEET 1 OF 1	DWG NO.: HB-20R-TER-014-1	1



TITLE: AWNING ASSEMBLY
 DWG NO.: HB-20R-TER-012-1 SHEET 1 OF 1

PARTS LIST					
ITEM	QTY	DESCRIPTION	WIDTH	LENGTH	MATERIAL
1	2	L 4 x 3 x 1/4		5'-1 3/4"	G40.21 50W
2	2	HSS 2 x 2 x 1/8		6'-10 1/2"	G40.21 50W
3	2	STD. SIDE PANEL	3'-5 1/4"	4'-9 3/4"	G40.21 44W
4	4	4" WELD-ON HINGE			STEEL
5	3	RD. BAR $\phi 5/8$ "		9"	G40.21 44W
6	2	SPRING LATCH - TBD			STEEL

- GENERAL NOTES:**
1. ALL DIMENSIONS IN INCHES U.N.O.
 2. ALL STRUCTURAL WELDS ARE 3/16" FILLET U.N.O.
 3. ALL WELDING AND CONSUMABLES CONFORMS TO CWB W59
 4. FABRICATION TOLERANCE $\pm 1/16$ "
 5. PAINT AS PER MANUFACTURE STANDARD
 6. ADAPT PARTS AS NEEDED TO FIT PER SHOP FABRICATION STANDARD

REV	DESCRIPTION	REV BY	DATE
1	IFC	MDK/RS	06/09/23
A	INITIAL RELEASE	MDK/RS	06/30/20

REVISION HISTORY

HONOMOBO

HB-20R-TER-012-1 IS THE PROPERTY OF TERRALUX INC. IT IS TO BE USED ONLY FOR THE PROJECT AND SITE SPECIFICALLY IDENTIFIED IN THE TITLE BLOCK. IT IS TO BE KEPT IN THE ORIGINAL UNREVISED FORM AND NOT REPRODUCED OR TRANSMITTED IN ANY FORM OR BY ANY MEANS, ELECTRONIC OR MECHANICAL, INCLUDING PHOTOCOPYING, RECORDING, OR BY ANY INFORMATION STORAGE AND RETRIEVAL SYSTEM. ANY UNAUTHORIZED USE OF THIS DRAWING IS PROHIBITED AND WILL BE PROSECUTED TO THE FULL EXTENT OF THE LAW.

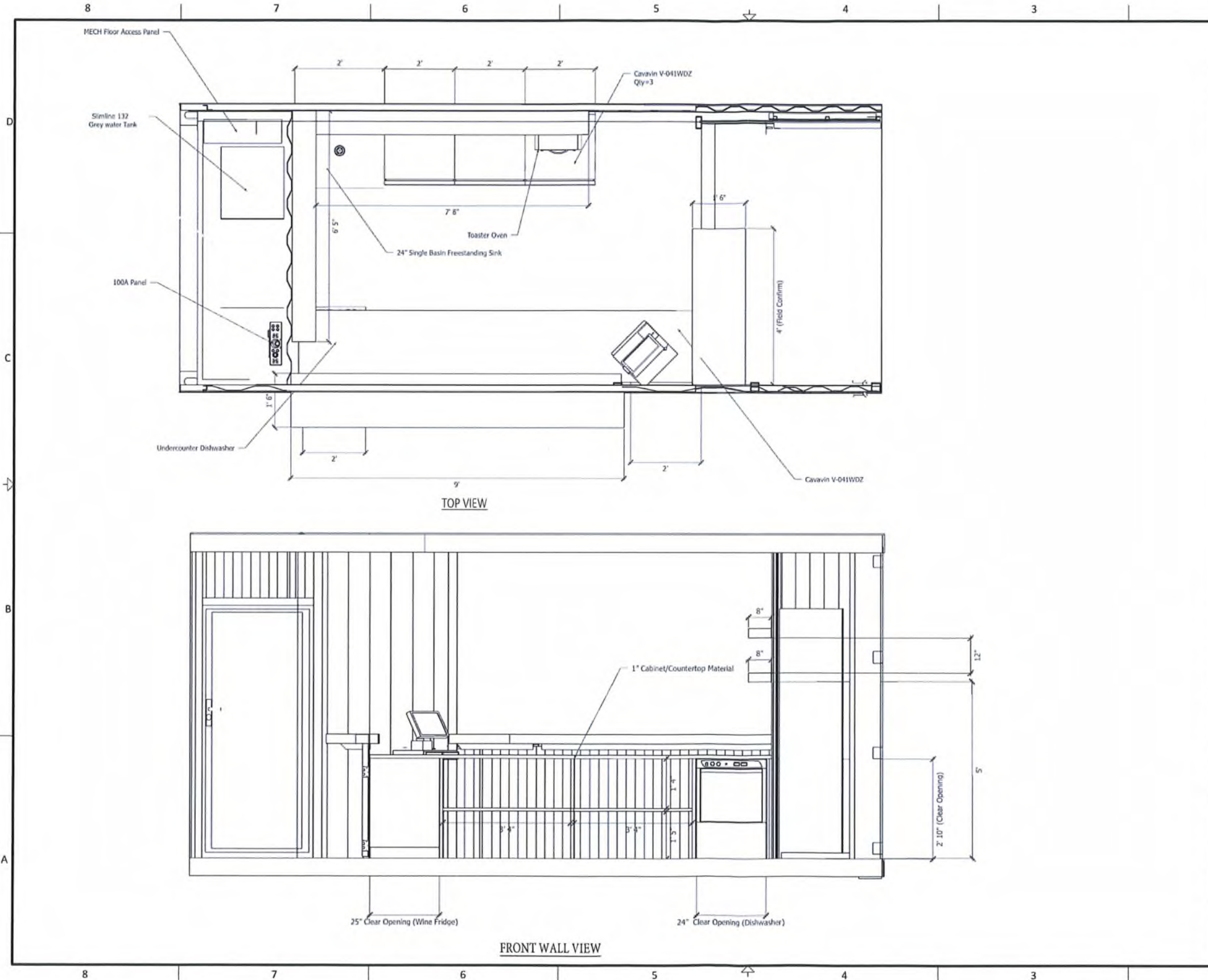
TITLE: AWNING ASSEMBLY

PROJECT: HONOMOBAR 20 FT - R - Terralux

DRAWN BY: MDK 06/30/20 CHECKED BY: RS 06/30/20

SCALE: NTS PROJECT NO.: HB-20R-TER

SHEET 1 OF 1 DWG NO.: HB-20R-TER-012-1 REV 1



TITLE: COUNTERTOP - THREE PARTS ASSEMBLY
 DWG NO.: HB-20R-TER-018-1 SHEET 1 OF 1

PARTS LIST					
ITEM	QTY	DESCRIPTION	WIDTH	LENGTH	MATERIAL
1	1	PLANK 3 1/8"	1'-6"	9' 0"	DOUGLAS FIR
2	1	PLANK 3 1/8"	1'-6"	4' 0"	DOUGLAS FIR
3	1				

- GENERAL NOTES:**
1. ALL DIMENSIONS IN INCHES U.N.O.
 2. ALL STRUCTURAL WELDS ARE 3/16" FILLET U.N.O.
 3. ALL WELDING AND CONSUMABLES CONFORMS TO CWB W59
 4. FABRICATION TOLERANCE ± 1/16"
 5. PAINT AS PER MANUFACTURE STANDARD
 6. ADAPT PARTS AS NEEDED TO FIT PER SHOP FABRICATION STANDARD

REV	DESCRIPTION	REV BY	DATE
1	I F C	MDK/RS	06/09/23
A	INITIAL RELEASE	MDK/RS	06/30/20

REVISION HISTORY



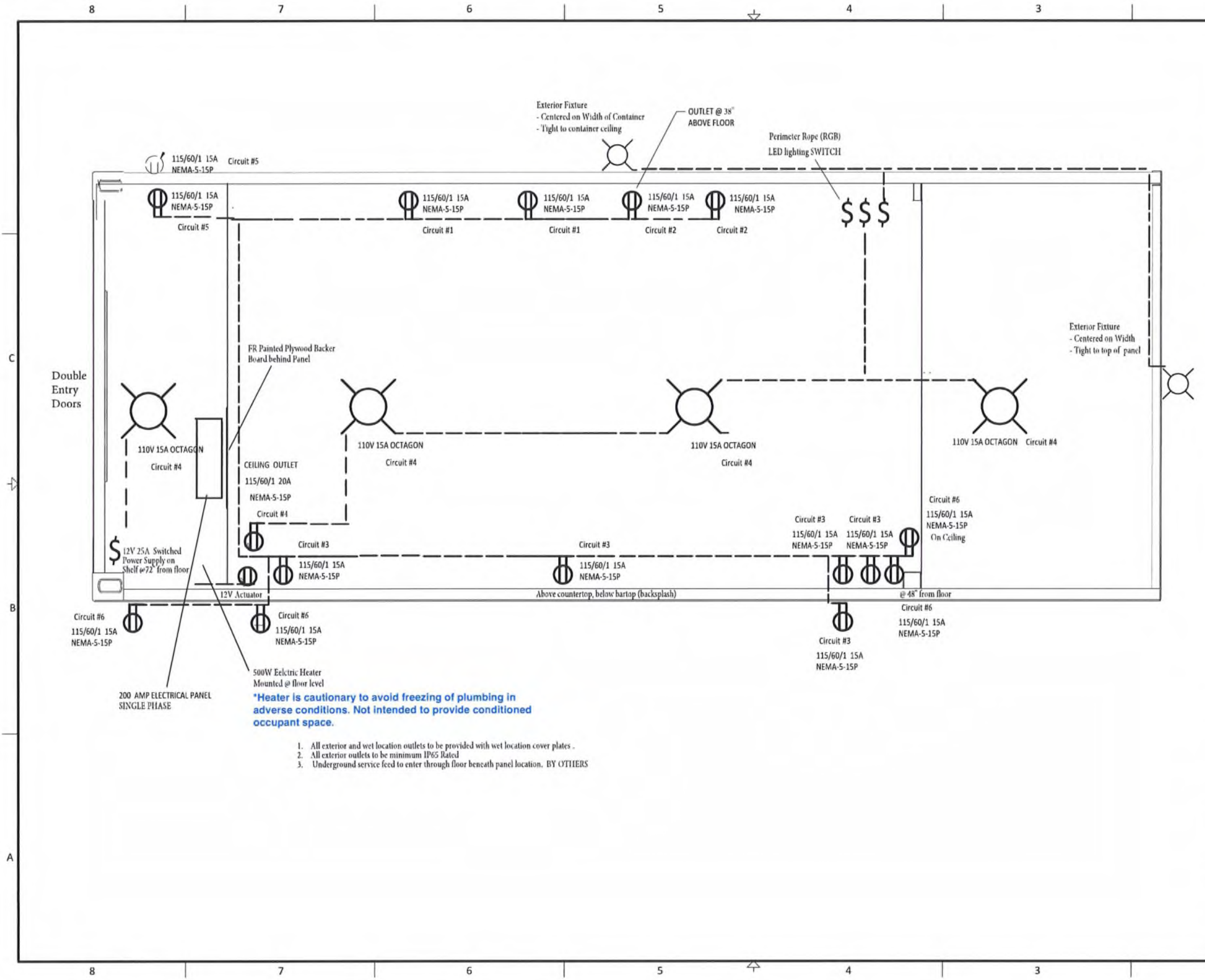
TITLE: FINISHING AND EQUIPMENT PLANS

PROJECT: HONOMOBAR 20 FT - R - Terralux

DRAWN BY: MDK 06/30/20 CHECKED BY: RS 06/30/20

SCALE: NTS PROJECT NO.: HB-20R-TER

SHEET 1 OF 1 DWG NO.: HB-20R-TER-018-1



*Heater is cautionary to avoid freezing of plumbing in adverse conditions. Not intended to provide conditioned occupant space.

1. All exterior and wet location outlets to be provided with wet location cover plates.
2. All exterior outlets to be minimum IP65 Rated
3. Underground service feed to enter through floor beneath panel location. BY OTTIEERS

TITLE: 200A ELECTRICAL PLAN
 DWG NO.: HB-20R-TER-022-1 SHEET 1 OF 1

Panel Information			
Panel Type	Eaton BR Loadcenter	Main Breaker Rating	200A Single Phase
Voltage	120/240		
CCT	CCT Description	Cable Size	CCT
1	Production Facility	N/A	2
3	Feeder (Future)		4
5			6 RR Wall Outlets #1
7			8 RR Wall Outlets #2
9			10 FR Wall Outlets
11			12 LED Lighting
13			14 Mech Rm Aux
15			16 Outside/Ceiling
17			18
19			20
21			22
23			24
25			26
27			28
29			30
31			32
33			34
35			36
37			38
39			40

REV	DESCRIPTION	REV BY	DATE
1	IFC	RS	06/09/2023
A	INITIAL RELEASE	MDK/RS	06/30/20

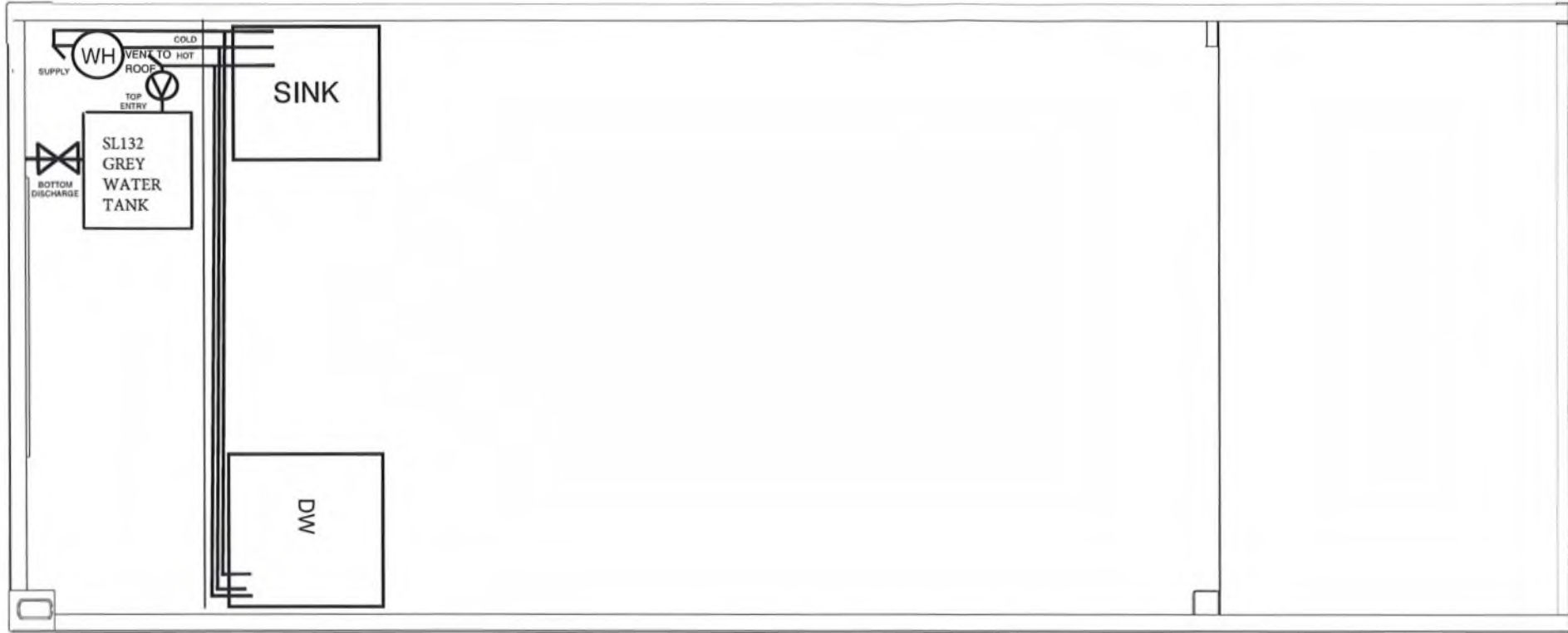
REVISION HISTORY

HONOMOBO

TITLE: 200A ELECTRICAL PLAN
 PROJECT: HONOMOBAR 20 FT - R - Terralux
 DRAWN BY: MDK 06/30/20 CHECKED BY: RS 06/30/20
 SCALE: NTS PROJECT NO.: HB-20R-TER
 SHEET 1 OF 1 DWG NO.: HB-20R-TER-022-1 REV 1

8 7 6 5 4 3 2 1

1. Include Valve and drain lines to isolate bar area from mechanical room (seasonally).
2. Water Supply line to be heat-traced to a depth >4' at entry into container.
3. Mechanical room floor walls and partition wall to be insulated, and room to include thermostatically operated electric heater.



***Note building is reliant on natural ventilation. Awning and end wall to be open during operation to encourage natural air flow through space. No HVAC or other heating equipment exists for this seasonal use space.**

TITLE: MECHANICAL PLAN
 DWG NO: HB-20R-TER-022-2 SHEET 1 OF 1

REV	DESCRIPTION	REV BY	DATE
1	I F C	MDK/RS	06/09/23
A	INITIAL RELEASE	MDK/RS	06/30/20

REVISION HISTORY

HONOMOBO

THIS DRAWING, INCLUDING ALL CONTENTS, AND PROPRIETARY EQUIPMENT, BY COINTEGRATED SHALL BE DEEMED TO BE THE PROPERTY OF COINTEGRATED. IT IS TO BE USED ONLY FOR THE PROJECT AND NOT TO BE REPRODUCED OR TRANSMITTED IN ANY FORM OR BY ANY MEANS, ELECTRONIC OR MECHANICAL, INCLUDING PHOTOCOPYING, RECORDING, OR BY ANY INFORMATION STORAGE AND RETRIEVAL SYSTEM, WITHOUT THE WRITTEN PERMISSION OF COINTEGRATED.

TITLE: MECHANICAL PLAN
 PROJECT: HONOMOBAR 20 FT - R - Terralux
 DRAWN BY: MDK 06/30/20 CHECKED BY: RS 06/30/20
 SCALE: NTS PROJECT NO: HB-20R-TER
 SHEET 1 OF 1 DWG NO: HB-20R-TER-022-2 REV 1

8 7 6 5 4 3 2 1



MATERIALS PLAN LEGEND

	CRUSHER FINES PAVING
	DECORATIVE PAVERS, BARKMAN ROMAN CIRCLE IN CHARCOAL
	FIR WOOD DECK PLATFORM, MAXIMUM 2' FROM GROUND
	TURF FROM SEED, WEST COAST SEEDS BEE TURF OR APPROVED EQUAL
	WOOD MULCH PLANTING AREAS - 75mm OF NATURES GOLD REGULAR
	RESTORATION GRASS SEED - FLOWERING ROADSIDE REVEGETATION MIX FROM TERRA LINK OR APPROVED EQUAL
	ORNAMENTAL PLANTING
	EXISTING TREES, CONTRACTOR TO REMOVE ANY TREES DEEMED TO HAVE INVASIVE TYPE PROPERTIES
	GABION BASKET WITH SOLAR LIGHT
	GABION BASKET SIGNAGE
	GABION BASKET BENCH WITH WOOD TOP
	6FT PICNIC BENCH WITH UMBRELLA
	BARREL RACK

NOTES

- LANDSCAPE STANDARD
WORK OF THE CONTRACTOR SHALL MEET OR EXCEED ALL SPECIFICATIONS AND STANDARDS ESTABLISHED IN THE LATEST VERSION OF SECTION 7 IN CITY OF KELOWNA BYLAW 12175 AND THE CANADIAN LANDSCAPE STANDARD (CPLS) PUBLISHED BY THE CANADIAN NURSERY LANDSCAPE ASSOCIATION (CNLA) AND THE CANADIAN SOCIETY OF LANDSCAPE ARCHITECTS (CSLA).
- INSPECTIONS
THE CONTRACTOR SHALL GIVE THE SITE INSPECTOR 48 HOURS NOTICE BEFORE ALL REQUIRED INSPECTIONS.
- WOOD MULCH
ALL LANDSCAPE BEDS TO RECEIVE 75MM DEPTH OF NATURES GOLD REGULAR.
- GROWING MEDIUM
IMPORT GROWING MEDIUM SHALL BE PLACED AT 300MM DEPTH IN ALL PLANTING AREAS AND 150MM DEPTH IN ALL TURF AREAS AND 50MM IN ALL RESTORATION GRASS SEEDED AREAS, AS SHOWN IN THE DRAWINGS. GROWING MEDIUM IS TO MEET PROPERTIES OF TYPE 2P FOR PLANTING AREAS AND TREE PITS AND TYPE 2L FOR TURF AREAS, AS PER TABLE T-6.3.5.3 IN THE LATEST EDITION OF THE CANADIAN LANDSCAPE STANDARD.
- DESIGN INTENT
THESE DRAWINGS ARE A REPRESENTATION OF THE GENERAL DESIGN INTENT TO BE IMPLEMENTED ON THE SITE. THE CONTRACTOR IS RESPONSIBLE FOR CONTACTING A LANDSCAPE ARCHITECT IF ANY ADDITIONAL CLARIFICATION OR DETAILS ARE NECESSARY TO ACCOMMODATE SITE CONDITIONS OR ARCHITECTURAL DETAILS.
- PLANT MATERIAL
ALL PLANT MATERIAL SUPPLIED AND PLACED BY THE CONTRACTOR MUST BE CERTIFIED TO BE FREE OF SUDDEN OAK DEATH (PHYTOPHTHORA RAMORUM). ACCORDING TO BCNA OR CANADIAN FOOD INSPECTION AGENCY (CFIA) STANDARDS. THE CONTRACTOR WILL BE HELD RESPONSIBLE FOR THE SUPPLY AND PLACEMENT OF DISEASED PLANTS RESULTING FROM THEIR NEGLIGENCE TO THE OWNER. AT SOURCE OF SUPPLY, PLANT MATERIAL AND PRODUCTS SHALL BE AVAILABLE FOR OPTIONAL INSPECTION BY THE LANDSCAPE ARCHITECT. THE CONTRACTOR SHALL PROVIDE A (5) YEAR REPLACEMENT GUARANTEE ON ALL PLANT MATERIAL FROM THE DATE OF SUBSTANTIAL PERFORMANCE. 80% SURVIVAL RATE IS REQUIRED FOR BOND TO BE RETURNED TO CLIENT.
- SUBSTITUTIONS
THE CONTRACTOR SHALL NOT SUBSTITUTE PLANT MATERIAL OR PRODUCTS WITHOUT THE WRITTEN CONSENT OF THE CLIENT AND WILL BE HELD RESPONSIBLE FOR THE REMOVAL AND REPLACEMENT OF ANY UNAPPROVED SUBSTITUTIONS.
- COMPOSITE BASE SHEET
THE PROPOSED IMPROVEMENTS DISPLAYED ON THESE DRAWINGS ARE SUPERIMPOSED ON THE BASE SHEET. THIS BASE SHEET IS COMPILED FROM ARCHITECTURAL AND/OR ENGINEERING DOCUMENTS, THE TOPOGRAPHIC SURVEY, AND OTHER DATA MADE AVAILABLE TO THE DESIGNER. THE DESIGNER SHALL NOT BE HELD LIABLE FOR INACCURACIES, OMISSIONS, CHANGES, OR OTHER ERRORS ON THESE DOCUMENTS. THE COMPOSITE BASE SHEET IS PROVIDED ONLY AS AN AID AND THE CONTRACTOR SHALL BE RESPONSIBLE FOR REVIEWING THESE DOCUMENTS AND INCORPORATING/INTEGRATING ALL CONSTRUCTION AS REQUIRED TO ACCOMMODATE SAME.
- CONTRACTOR'S JOB SITE CONDITIONS
CONTRACTOR AGREES TO ASSUME SOLE AND COMPLETE RESPONSIBILITY FOR SITE CONDITIONS DURING CONSTRUCTION. THIS INCLUDES: SAFETY OF ALL PERSONS AND PROPERTY; THAT THIS REQUIREMENT SHALL APPLY CONTINUOUSLY AND NOT BE LIMITED TO NORMAL WORKING HOURS; AND THAT THE CONTRACTOR SHALL DEFEND, INDEMNIFY, AND HOLD THE OWNER AND THE LANDSCAPE ARCHITECT HARMLESS FROM ANY AND ALL LIABILITY, REAL OR ALLEGED, IN CONNECTION WITH THE PERFORMANCE OF WORK ON THIS PROJECT. CONTRACTOR TO REFER ENVIRONMENTAL PROFESSIONALS REQUIREMENTS FOR KEEPING THE SITE WITHIN REGULATIONS.
- UTILITIES
THE CONTRACTOR IS RESPONSIBLE FOR CONTACTING THE UTILITY COMPANIES INVOLVED AND REQUESTING A VISUAL VERIFICATION OF THE LOCATIONS OF THEIR UNDERGROUND FACILITIES PRIOR TO CONSTRUCTION. MOST UTILITY COMPANIES HAVE ACCESS TO THE UNDERGROUND SERVICE ALERT PROGRAM CALL BEFORE YOU DIG. THE CONTRACTOR OR ANY SUBCONTRACTOR FOR THIS CONTRACT SHALL NOTIFY MEMBERS 48 HOURS PRIOR TO PERFORMING EXCAVATION WORK BY CALLING THE TOLL-FREE NUMBER (800) 474-6886. EXCAVATION IS DEFINED AS BEING 18 OR MORE INCHES IN DEPTH BELOW THE EXISTING SURFACE. THE CONTRACTOR IS CAUTIONED THAT EXCAVATION IS THE ONLY WAY TO REVEAL THE TYPES, EXTENT, SIZES, LOCATION, AND DEPTHS OF UNDERGROUND UTILITIES. HOWEVER, THE CONSULTANT CAN ASSUME NO RESPONSIBILITY FOR THE ACCURACY OR COMPLETENESS OF THE DELINEATION OF SAID UNDERGROUND UTILITIES, NOR FOR THE EXISTENCE OF OTHER BURIED OBJECTS OR UTILITIES NOT SHOWN ON THESE DRAWINGS.
- IRRIGATION
PERMANENT AUTOMATIC UNDERGROUND IRRIGATION SYSTEM TO BE INSTALLED UNDER ALL SOFTSCAPE MATERIAL BY A QUALIFIED IRRIGATION PROFESSIONAL.
- GRADING & DRAINAGE
ALL STRUCTURES TO HAVE POSITIVE DRAINAGE AWAY FROM BUILDINGS.



Okanagan Landscape Studio
info@oklandscapestudio.com
f i

Revision Issue

DESCRIPTION	DATE	NO.
Initial Concept	18/02/26	01
Final Concept	09/03/26	02

PROJECT
Ailm Estate Pop-Up

SITE ADDRESS
**4500 Stewart Rd,
Kelowna**

SHEET TITLE
MATERIALS PLAN

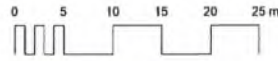
Design by SP
Project Number 25-004
Date 09/03/26

SCALE 1:200
PAGE 24x36"

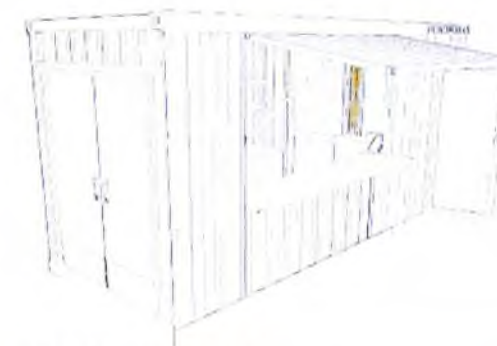
SHEET NUMBER

L-01

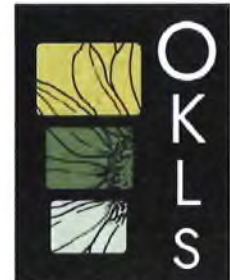
AILM ESTATE POP-UP LANDSCAPE CONCEPT



KEY MAP- APPROX LOCATION



CONTAINER POP-UP



Okanagan Landscape Studio
info@oklandscapestudio.com



DESCRIPTION	DATE	NO.
Initial Concept	18/02/26	01
Final Concept	09/03/26	02

PROJECT
Allm Estate Pop-Up

SITE ADDRESS
**4500 Stewart Rd,
Kelowna**

SHEET TITLE
COVER SHEET

Design by SP
Project Number 25-004
Date 09/03/26

SCALE 1:300
PAGE 24"x36"

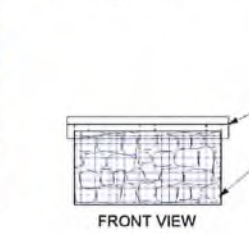
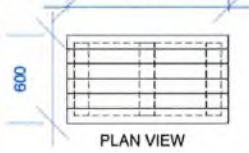
SHEET NUMBER

L-00

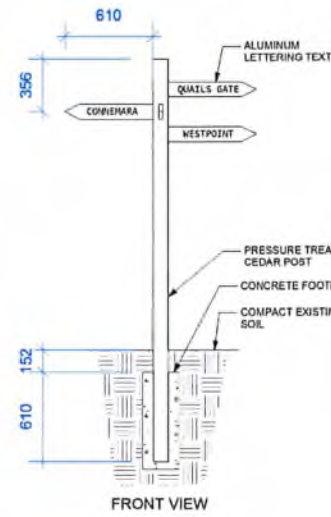


PRECEDENT IMAGES

NOTES:
1. PRESSURE TREATED CEDAR TOP MADE WITH 2X4 PIECES FITTED TO GABION BASKET

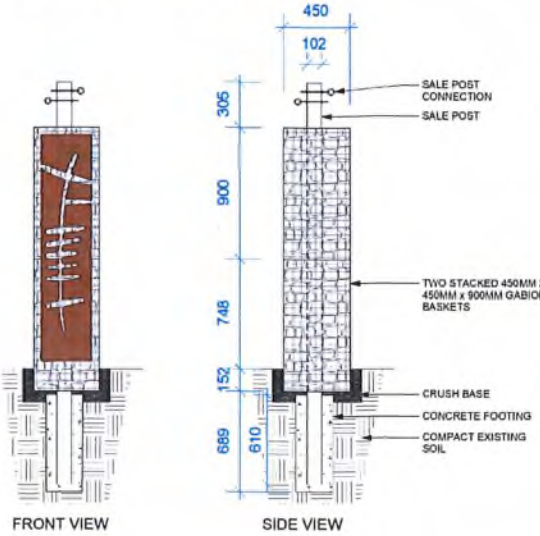


1 Gabion Bench- Rectangle
L-06 1:20

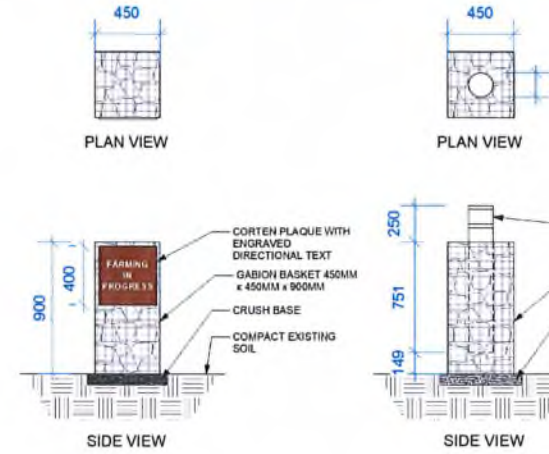


2 Post Directional Signage
L-06 1:20

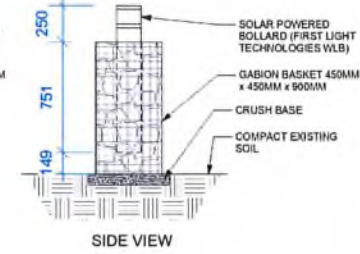
NOTES:
1. PARKWORKS SHADE SALE POLE AND CONNECTION HARDWARE
2. INSTALL PER MANUFACTURERES SPECIFICATIONS



3 Gabion Sale Post
L-06 1:20

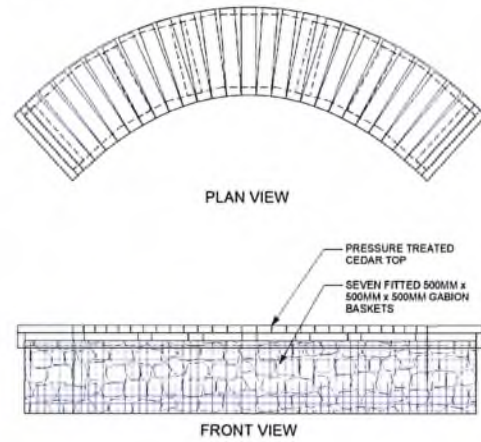


4 Gabion Directional Signage
L-06 1:20



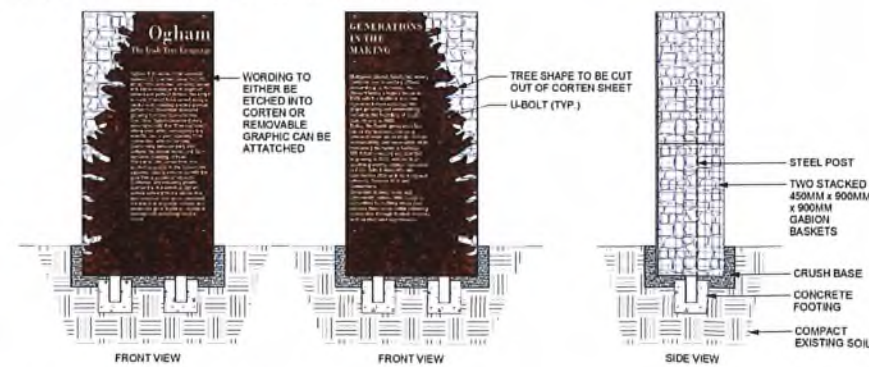
5 Gabion Light Posts
L-06 1:20

NOTES:
1. GABION BASKETS TO BE FITTED WITHIN EACHOTHER WITH SIDE PANELS TAKEN OFF TO CREATE CURVE FORM
2. PRESSURE TREATED CEDAR TOP MADE WITH 2X4 PIECES FITTED TO MAKE CURVE

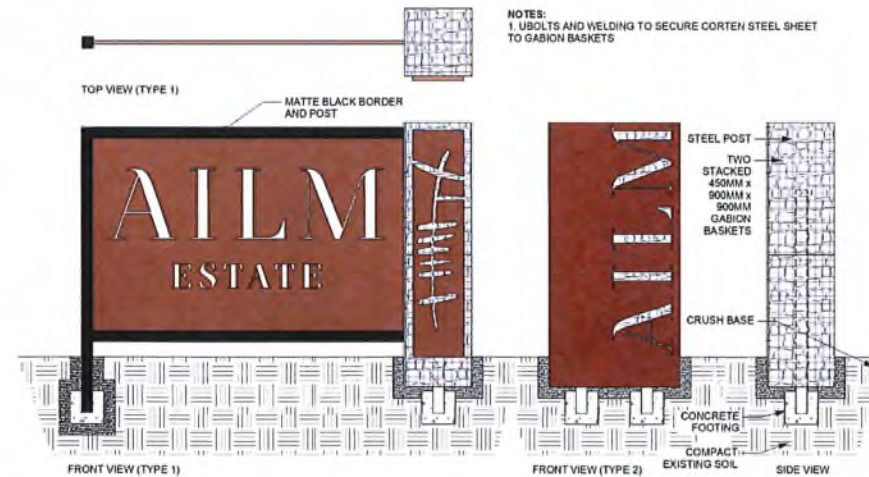


7 Gabion Bench- Curved
L-06 1:20

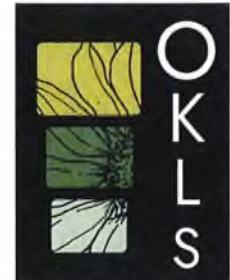
NOTES:
1. UBOLTS AND WELDING TO SECURE CORTEN STEEL SHEET TO GABION BASKETS



8 Gabion Informational Signage
L-06 1:20



9 Gabion Informational Signage
L-06 1:20



Okanagan Landscape Studio
info@oklandscapestudio.com



Revision Issue	DESCRIPTION	DATE	NO.
Initial Concept		20/02/26	01
Final Concept		09/03/26	02

PROJECT
Ailm Estate Pop-Up

SITE ADDRESS
**4500 Stewart Rd,
Kelowna**

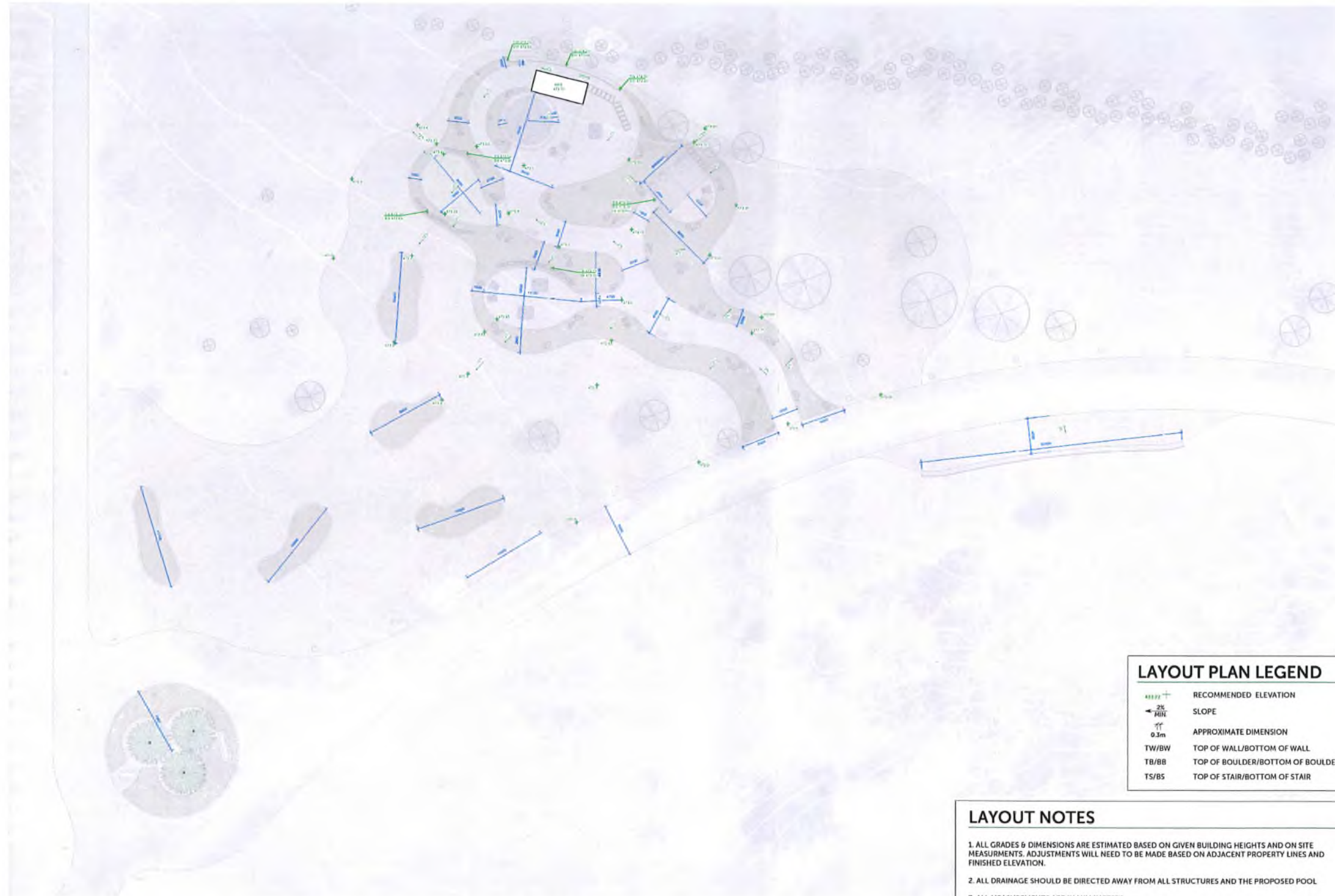
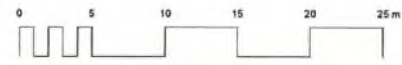
SHEET TITLE
DETAILS

Design by SP
Project Number 25-004
Date 09/03/26

SCALE
PAGE 24"x36"

SHEET NUMBER

L-04



LAYOUT PLAN LEGEND

	RECOMMENDED ELEVATION
	SLOPE
	APPROXIMATE DIMENSION
TW/BW	TOP OF WALL/BOTTOM OF WALL
TB/BB	TOP OF BOULDER/BOTTOM OF BOULDER
TS/BS	TOP OF STAIR/BOTTOM OF STAIR

LAYOUT NOTES

1. ALL GRADES & DIMENSIONS ARE ESTIMATED BASED ON GIVEN BUILDING HEIGHTS AND ON SITE MEASUREMENTS. ADJUSTMENTS WILL NEED TO BE MADE BASED ON ADJACENT PROPERTY LINES AND FINISHED ELEVATION.
2. ALL DRAINAGE SHOULD BE DIRECTED AWAY FROM ALL STRUCTURES AND THE PROPOSED POOL.
3. ALL MEASUREMENTS ARE IN MILLIMETERS



Okanagan Landscape Studio
 info@oklandscapestudio.com

Revision Issue

DESCRIPTION	DATE	NO.
Initial Concept	18/02/26	01
Final Concept	09/03/26	02

PROJECT
Ailm Estate Pop-Up

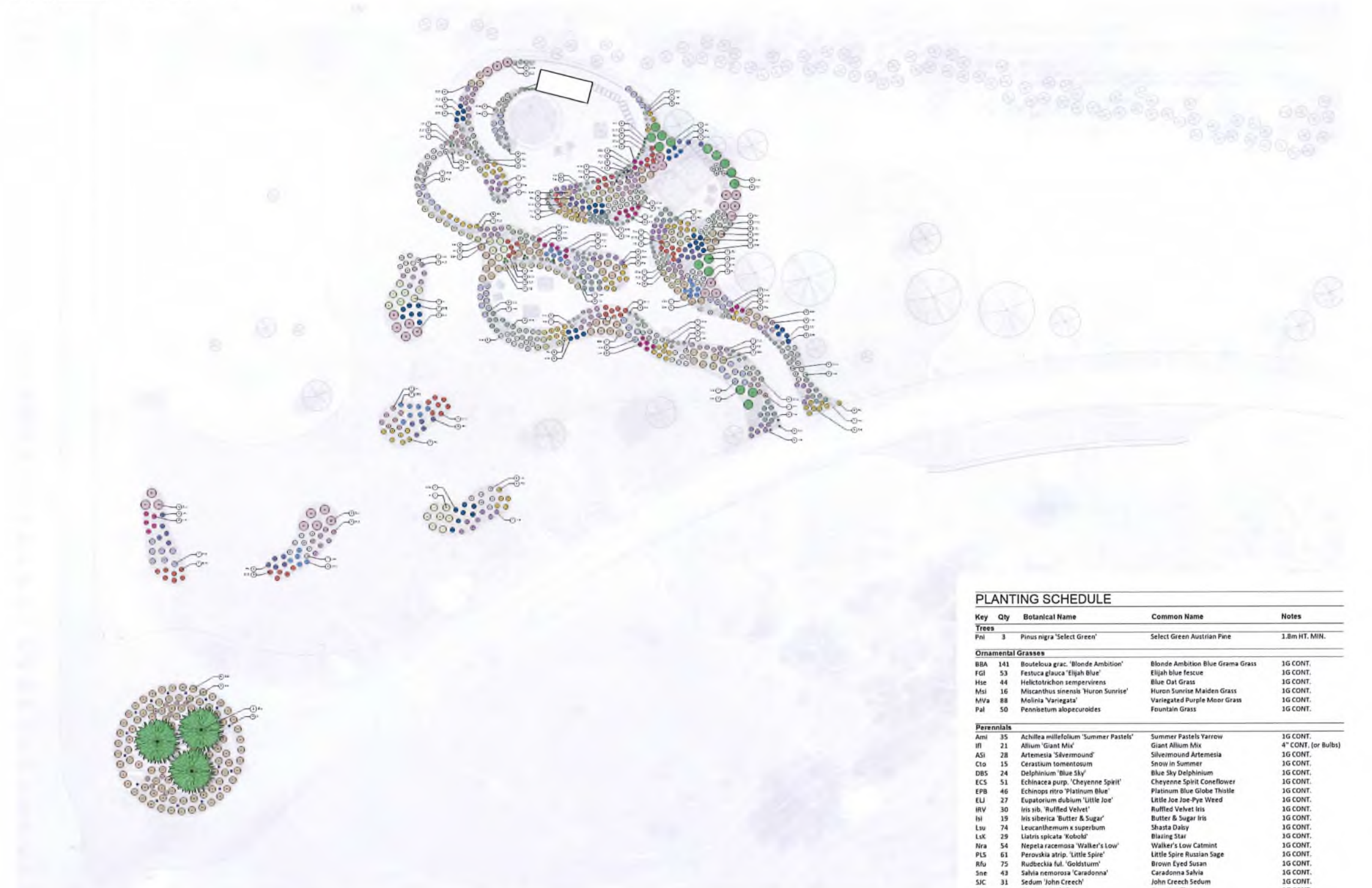
SITE ADDRESS
**4500 Stewart Rd,
 Kelowna**

SHEET TITLE
LAYOUT PLAN

Design by SP
 Project Number 25-004
 Date 09/03/26

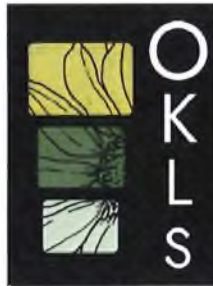
SCALE 1:100
 PAGE 24 of 36

SHEET NUMBER
L-02



PLANTING SCHEDULE

Key	Qty	Botanical Name	Common Name	Notes
Trees				
Pni	3	Pinus nigra 'Select Green'	Select Green Austrian Pine	1.8m HT. MIN.
Ornamental Grasses				
BBA	141	Bouteloua grac. 'Blonde Ambition'	Blonde Ambition Blue Grama Grass	1G CONT.
FGI	53	Festuca glauca 'Elijah Blue'	Elijah blue fescue	1G CONT.
Hse	44	Helictotrichon sempervirens	Blue oat Grass	1G CONT.
Msi	16	Miscanthus sinensis 'Huron Sunrise'	Huron Sunrise Maiden Grass	1G CONT.
MVa	88	Molinia 'Variegata'	Variegated Purple Moor Grass	1G CONT.
Pal	50	Pennisetum alopecuroides	Fountain Grass	1G CONT.
Perennials				
Ami	35	Achillea millefolium 'Summer Pastels'	Summer Pastels Yarrow	1G CONT.
Alf	21	Allium 'Giant Mix'	Giant Allium Mix	4" CONT. (or Bulbs)
ASI	28	Artemisia 'Silvermound'	Silvermound Artemisia	1G CONT.
Cto	15	Cerastium tomentosum	Snow in Summer	1G CONT.
DBS	24	Delphinium 'Blue Sky'	Blue Sky Delphinium	1G CONT.
ECS	51	Echinacea purp. 'Choyenne Spirit'	Choyenne Spirit Coneflower	1G CONT.
EPB	46	Echinops ritro 'Platinum Blue'	Platinum Blue Globe Thistle	1G CONT.
ELI	27	Eupatorium dubium 'Little Joe'	Little Joe Joe-Pye Weed	1G CONT.
IRV	30	Iris sib. 'Ruffled Velvet'	Ruffled Velvet Iris	1G CONT.
ISI	19	Iris siberica 'Butter & Sugar'	Butter & Sugar Iris	1G CONT.
Lsu	74	Leucanthemum x superbum	Shasta Daisy	1G CONT.
LxK	29	Liatris spicata 'Kobold'	Blazing Star	1G CONT.
Nra	54	Nepeta racemosa 'Walker's Low'	Walker's Low Catmint	1G CONT.
PLS	61	Perovskia atrip. 'Little Spire'	Little Spire Russian Sage	1G CONT.
Rfu	75	Rudbeckia ful. 'Goldsturm'	Brown Eyed Susan	1G CONT.
Sne	43	Salvia nemorosa 'Caradonna'	Caradonna Salvia	1G CONT.
SIC	31	Sedum 'John Creech'	John Creech Sedum	1G CONT.
Tse	5	Thymus serpyllum	Creeping Thyme	1G CONT.



Okanagan Landscape Studio
info@oklandscapestudio.com



Revision Issue	DESCRIPTION	DATE	NO.
Initial Concept		18/02/26	01
Final Concept		09/03/26	02

PROJECT
Ailm Estate Pop- Up

SITE ADDRESS
**4500 Stewart Rd,
Kelowna**

SHEET TITLE
PLANTING PLAN

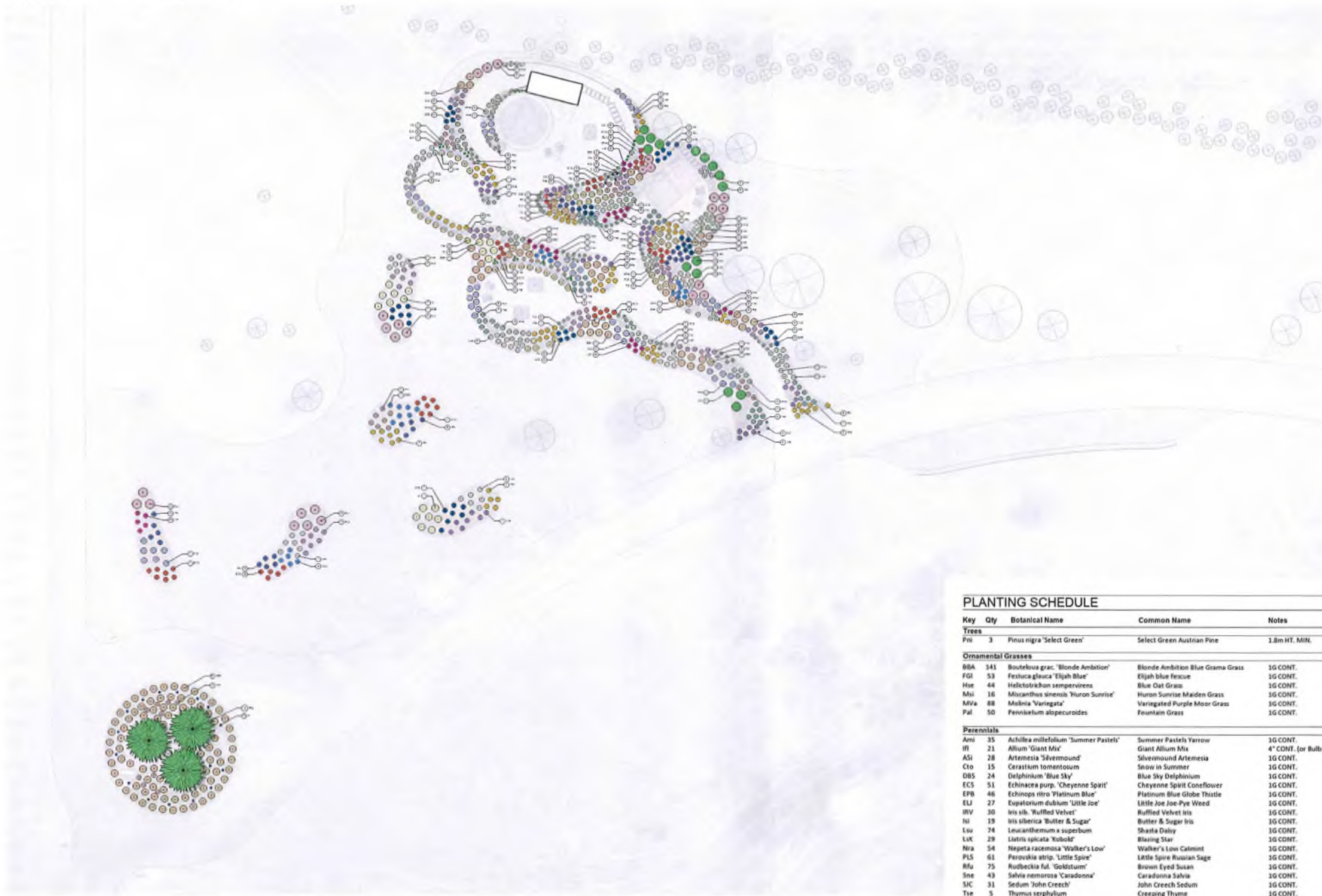
Design by **SP**
Project Number **25-004**

Date **09/03/26**

SCALE **1:100**
PAGE **24 of 38**

SHEET NUMBER

L-03



PLANTING SCHEDULE

Key	Qty	Botanical Name	Common Name	Notes
Trees				
Pni	3	<i>Pinus nigra</i> 'Select Green'	Select Green Austrian Pine	1.8m HT. MIN.
Ornamental Grasses				
BBA	141	<i>Bouteloua grac.</i> 'Blonde Ambition'	Blonde Ambition Blue Grama Grass	1G CONT.
FGI	53	<i>Festuca glauca</i> 'Elijah Blue'	Elijah blue fescue	1G CONT.
Hse	44	<i>Helictotrichon sempervirens</i>	Blue Oat Grass	1G CONT.
Msi	16	<i>Miscanthus sinensis</i> 'Huron Sunrise'	Huron Sunrise Maiden Grass	1G CONT.
MVa	88	<i>Molinia</i> 'Variegata'	Variegated Purple Moor Grass	1G CONT.
Pal	50	<i>Pennisetum alopecuroides</i>	Fountain Grass	1G CONT.
Perennials				
Ami	35	<i>Achillea millefolium</i> 'Summer Pastels'	Summer Pastels Yarrow	1G CONT.
IFI	21	<i>Allium</i> 'Giant Mix'	Giant Allium Mix	4" CONT. (or Bulbs)
ASI	28	<i>Artemisia</i> 'Silvermound'	Silvermound Artemisia	1G CONT.
Cto	15	<i>Cerastium tomentosum</i>	Snow in Summer	1G CONT.
DBS	24	<i>Delphinium</i> 'Blue Sky'	Blue Sky Delphinium	1G CONT.
ECS	51	<i>Echinacea purp.</i> 'Cheyenne Spirit'	Cheyenne Spirit Coneflower	1G CONT.
EPB	46	<i>Echinops ritro</i> 'Platinum Blue'	Platinum Blue Globe Thistle	1G CONT.
ELJ	27	<i>Eupatorium dubium</i> 'Little Joe'	Little Joe Joe-Pye Weed	1G CONT.
IRV	30	<i>Iris sibir.</i> 'Ruffled Velvet'	Ruffled Velvet Iris	1G CONT.
NI	19	<i>Iris sibirica</i> 'Butter & Sugar'	Butter & Sugar Iris	1G CONT.
Lsu	74	<i>Leucanthemum x superbum</i>	Shasta Daisy	1G CONT.
LxK	29	<i>Liatris spicata</i> 'Kobold'	Blazing Star	1G CONT.
Nra	54	<i>Nepeta racemosa</i> 'Walker's Low'	Walker's Low Catmint	1G CONT.
PLS	61	<i>Perovskia atrop.</i> 'Little Spire'	Little Spire Russian Sage	1G CONT.
Rfu	75	<i>Rudbeckia ful.</i> 'Goldsturm'	Brown Eyed Susan	1G CONT.
Sne	43	<i>Salvia nemorosa</i> 'Caradonna'	Caradonna Salvia	1G CONT.
SJC	31	<i>Sedum</i> 'John Creech'	John Creech Sedum	1G CONT.
Tie	5	<i>Thymus serpyllum</i>	Creeping Thyme	1G CONT.



Okanagan Landscape Studio
info@oklandscapstudio.com



Revision Issue

DESCRIPTION	DATE	NO.
Initial Concept	18/02/26	01
Final Concept	09/03/26	02

PROJECT

Ailm Estate Pop-Up

SITE ADDRESS

4500 Stewart Rd,
Kelowna

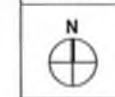
SHEET TITLE

PLANTING PLAN

Design by SP

Project Number 25-004

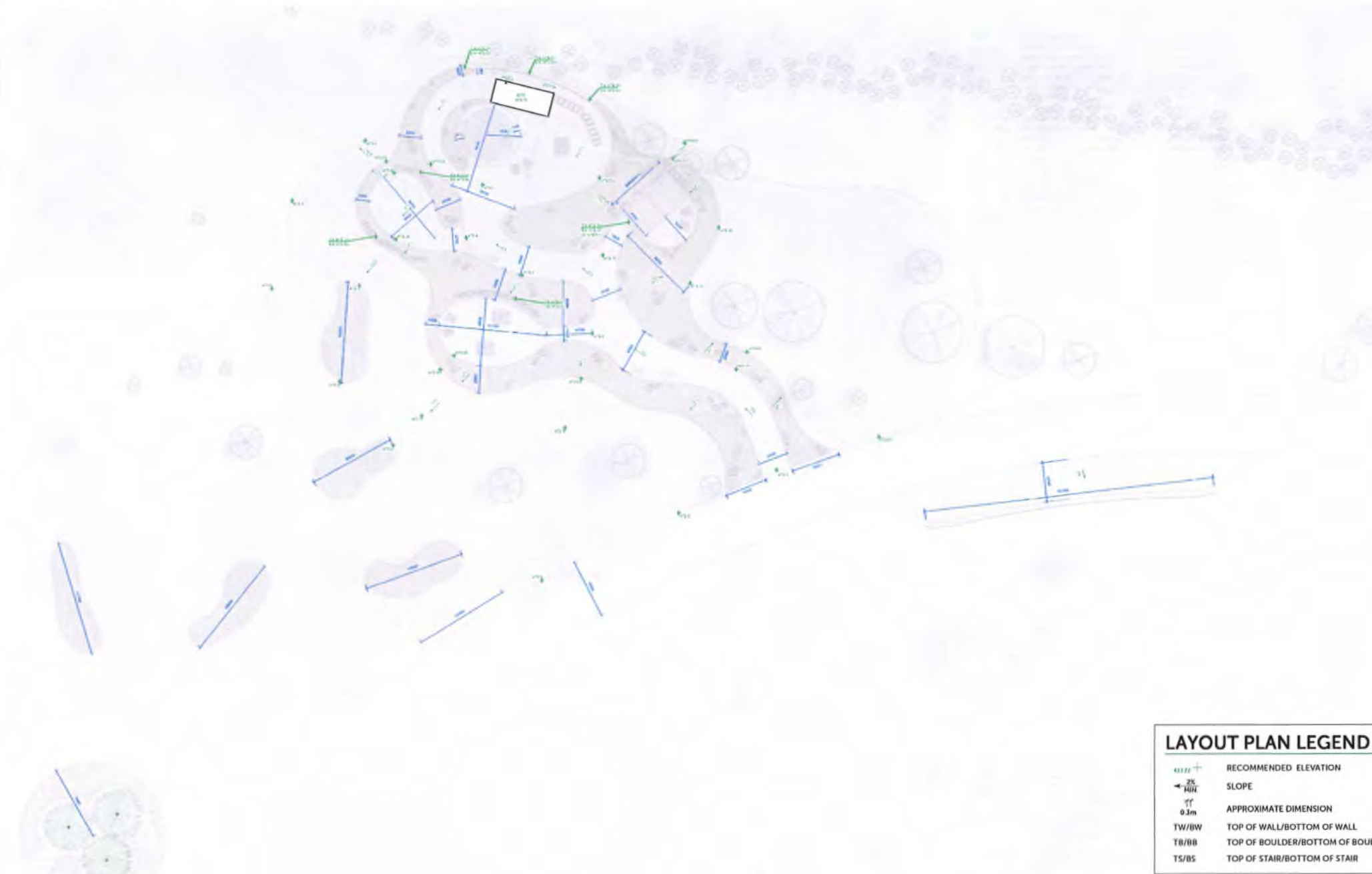
Date 09/03/26



SCALE
1:100
PAGE
24"x36"

SHEET NUMBER

L-03



LAYOUT PLAN LEGEND	
	RECOMMENDED ELEVATION
	SLOPE
	APPROXIMATE DIMENSION
TW/BW	TOP OF WALL/BOTTOM OF WALL
TB/BB	TOP OF BOULDER/BOTTOM OF BOULDER
TS/BS	TOP OF STAIR/BOTTOM OF STAIR

LAYOUT NOTES

1. ALL GRADES & DIMENSIONS ARE ESTIMATED BASED ON GIVEN BUILDING HEIGHTS AND ON SITE MEASUREMENTS. ADJUSTMENTS WILL NEED TO BE MADE BASED ON ADJACENT PROPERTY LINES AND FINISHED ELEVATION.
2. ALL DRAINAGE SHOULD BE DIRECTED AWAY FROM ALL STRUCTURES AND THE PROPOSED POOL.
3. ALL MEASUREMENTS ARE IN MILLIMETERS



Okanagan Landscape Studio
 info@oklandscapestudio.com

Revision Issue		
DESCRIPTION	DATE	NO.
Initial Concept	18/02/26	01
Final Concept	09/03/26	02

PROJECT
Ailm Estate Pop-Up

SITE ADDRESS
**4500 Stewart Rd,
 Kelowna**

SHEET TITLE
LAYOUT PLAN

Design by SP
 Project Number 25-004
 Date 09/03/26

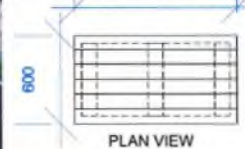
SCALE 1:100
 PAGE 24 of 36

SHEET NUMBER
L-02

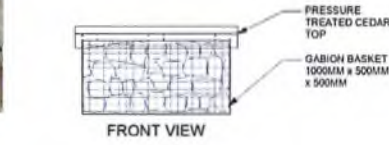


PRECEDENT IMAGES

NOTES:
1. PRESSURE TREATED CEDAR TOP MADE WITH 2X4 PIECES FITTED TO GABION BASKET

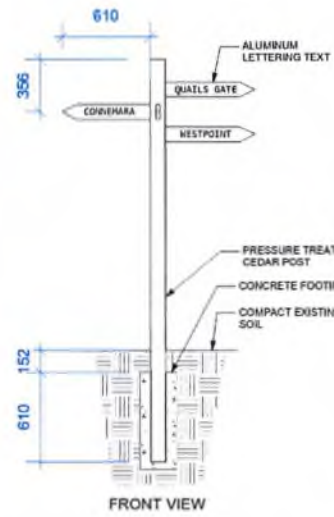


PLAN VIEW



FRONT VIEW

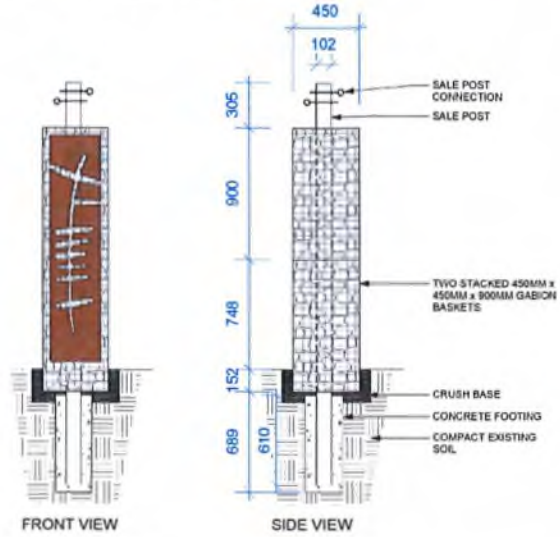
1 Gabion Bench- Rectangle
L-06 1:20



FRONT VIEW

2 Post Directional Signage
L-06 1:20

NOTES:
1. PARKWORKS SHADE SALE POLE AND CONNECTION HARDWARE
2. INSTALL PER MANUFACTURERES SPECIFICATIONS



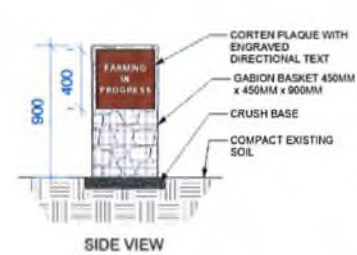
FRONT VIEW

SIDE VIEW

3 Gabion Sale Post
L-06 1:20



PLAN VIEW

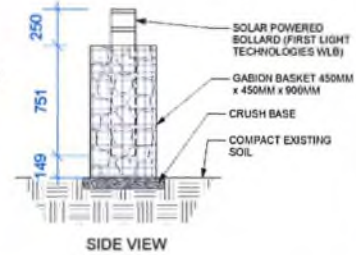


SIDE VIEW

4 Gabion Directional Signage
L-06 1:20



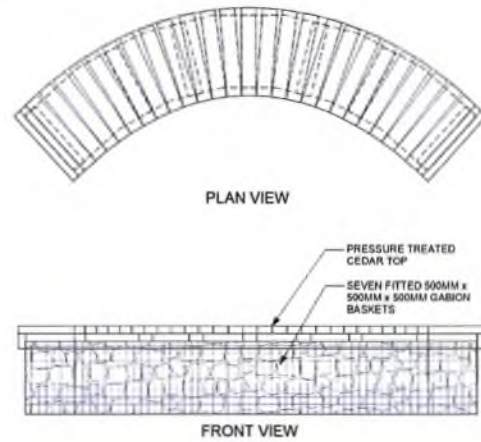
PLAN VIEW



SIDE VIEW

5 Gabion Light Posts
L-06 1:20

NOTES:
1. GABION BASKETS TO BE FITTED WITHIN EACHOTHER WITH SIDE PANELS TAKEN OFF TO CREATE CURVE FORM
2. PRESSURE TREATED CEDAR TOP MADE WITH 2X4 PIECES FITTED TO MAKE CURVE

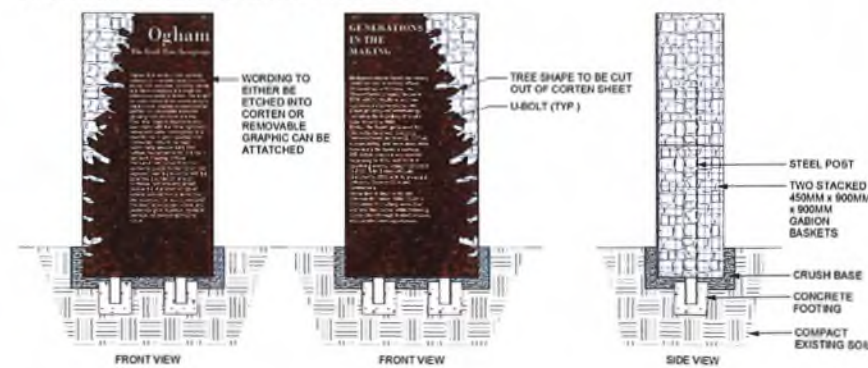


PLAN VIEW

FRONT VIEW

7 Gabion Bench- Curved
L-06 1:20

NOTES:
1. BOLTS AND WELDING TO SECURE CORTEN STEEL SHEET TO GABION BASKETS

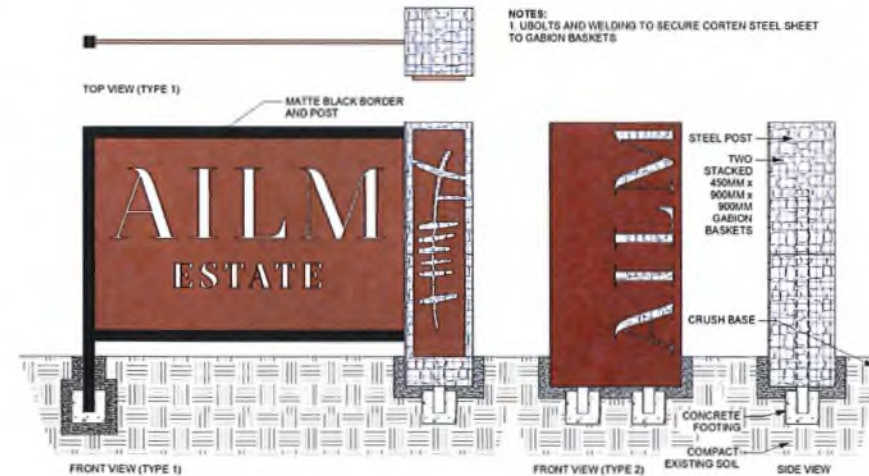


FRONT VIEW

FRONT VIEW

SIDE VIEW

8 Gabion Informational Signage
L-06 1:20



FRONT VIEW (TYPE 1)

FRONT VIEW (TYPE 2)

SIDE VIEW

9 Gabion Informational Signage
L-06 1:20



Okanagan Landscape Studio
info@oklanandscapestudio.com



DESCRIPTION	DATE	NO.
Initial Concept	20/02/26	01
Final Concept	09/03/26	02

PROJECT

Ailm Estate Pop-Up

SITE ADDRESS

4500 Stewart Rd,
Kelowna

SHEET TITLE

DETAILS

Design by SP
Project Number 25-004
Date 09/03/26

SCALE
PAGE 24"x36"

SHEET NUMBER

L-04









